



CMR Electrical Ltd
Bolton House
Five Chimneys Lane
Hadlow Down
East Sussex
TN22 4DX
Tel: 01825 733600

ODS2 One & Two Zone Oil Leak Detection with Beacon Installation and Operation Manual



Contents

- 1) *Operation*
- 2) *Lamp, Horn and Relay Test*
- 3) *Oil Detected Alarm*
- 4) *Installation Drawing*
- 5) *Installation*
- 6) *Positioning the oil detection sensor*
- 7) *Commissioning*
- 8) *Fault Diagnoses*

1) Operation

In normal mode with no alarms, the audible warning device will be OFF, the “ Detected” alarm lamp will be OFF. and the green Control Live lamp will be ON.

2) Lamp, Horn and Relay Test

The unit has a test feature which starts the horn, closes the Alarm relay and turn ON each. The test facility can be used at any time regardless of any alarms or faults on the system. To start the system test

procedure, press and hold down the “Mute Alarm” button for approximately 5 seconds. When the test starts releasing the Mute button will stop the test.

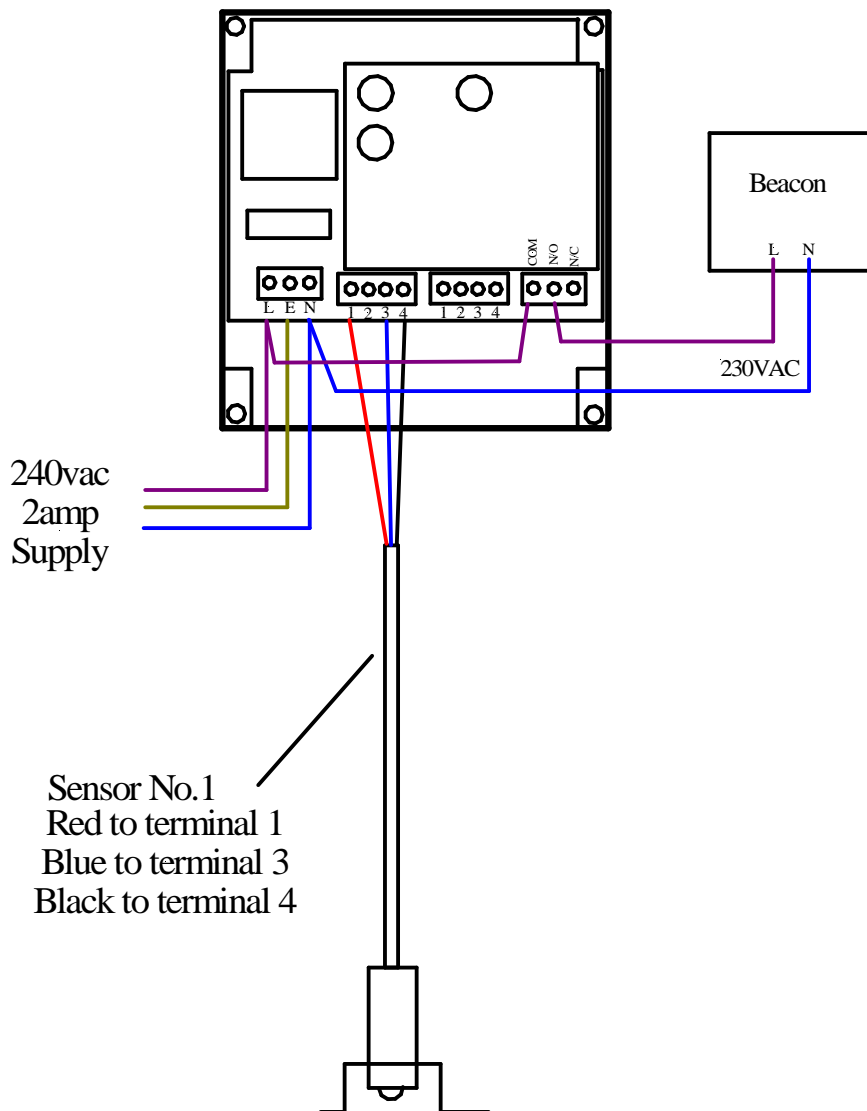
REMEMBER, WHEN USING THIS TEST FACILITY THE OUTPUT ALARM RELAY WILL CLOSE.

3) Oil Detected Alarm

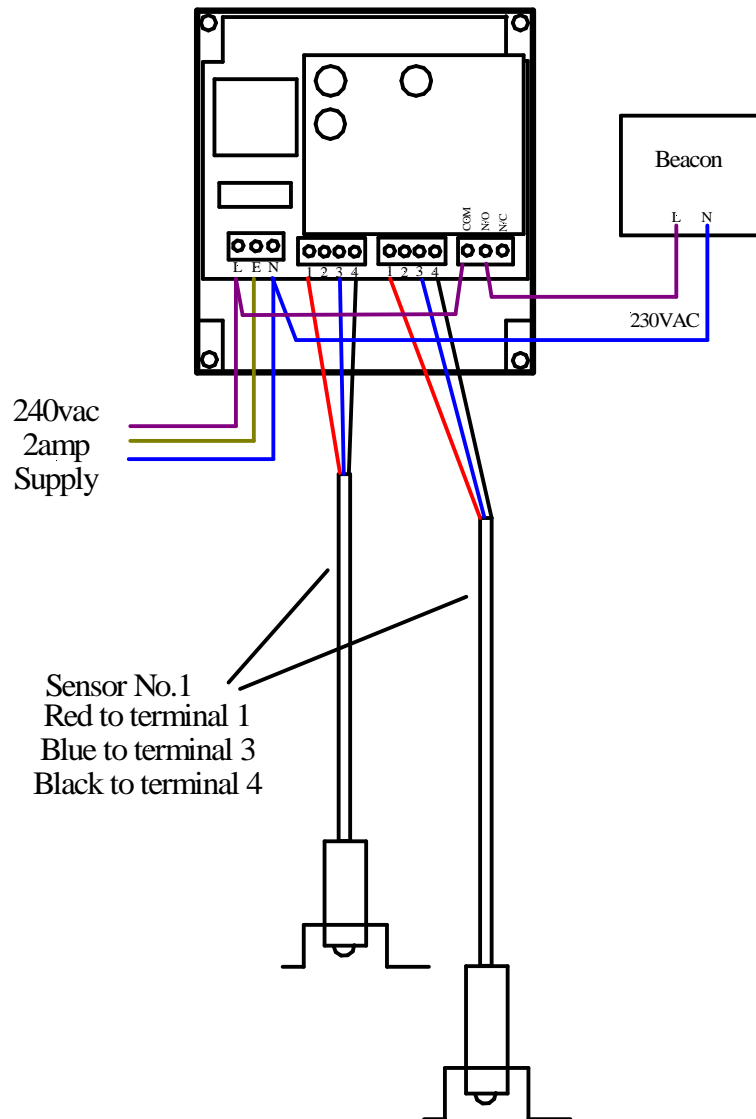
When the detection sensor comes into contact with oil, the audible warning device will start, the alarm relay will close and the red “Oil Detected” lamp will start flashing. To stop the audible warning press the “Mute Alarm” button. On muting, the “Oil Detected” lamp will stop flashing and remain permanently ON indicating an acknowledged alarm. The system will remain in this state until the Oil is removed from the cable when the “Oil Detected” lamp and alarm relay will automatically turn OFF.

4) Installation Drawings

1 Zone Oil Detection Connections



2 Zone Oil Detection Connections



5) Installation

THIS EQUIPMENT SHOULD ONLY BE CONNECTED AND WORKED ON BY A QUALIFIED ELECTRICIAN.

To mount the unit to a wall, first remove the front cover to expose the internal equipment. In each corner of the housing positioned below/above the front cover fixings will be found the mounting holes.

Plastic glands should be used for incoming power and outgoing signal cables. Care should be taken when drilling the holes to ensure no damage occurs to the electronic equipment.

A suitably rated 230VAC power cable supply should be run from a fused spur to the unit and terminated to the internal terminal block marked “L”, “E” & “N”. The fuse within the fused spur should be rated at 5 Amps.

The signal cable should be terminated between the oil sensor and the main control unit in the following manner.

Main Controller terminal number	Signal wire colour
---------------------------------	--------------------

1	Red
3	Blue
4	Black

9) Positioning the oil detection sensor

The detection sensor is susceptible to damage and should not be fitted to areas where it is likely to be damaged or walked on. As the sensor will also detect water it should not be positioned outdoors unless under cover. The sensor can be screwed or stuck to the floor using the supplied stainless steel bracket.

10) Commissioning

Having connected the unit as described above, turn of the mains power to the unit. The “Control Live” should illuminate. If not, refer to the “Fault Diagnostics” below. If the unit powers up with the audible warning going and one of the lights flashing RED, press the mute button and wait to see if the alarm clears. If the alarm remains ON after approximately 20 seconds , refer to the “Fault Diagnostics” below. With the unit powered and only the control live green lamp on, using a cup of CLEAN water, immerse the sensor into the water. The controller “Oil detected” lamp should start to flash RED and the audible warning device should be ON, if not refer to the “Fault Diagnostics” below. With the “Oil detected” lamp flashing, press the “Mute” button. The audible warning device should stop and the “Oil detected” lamp should stop flashing but remain ON. Remove the water and wipe the sensor with some tissue, the “Oil detected” lamp should turn OFF, if not refer to the “Fault Diagnostics” below.

12) Fault Diagnoses

<i>Fault</i>	<i>Possible Reason</i>
ALL LEDS are OFF and the unit appears dead	1) No power to the control unit. <i>Test with a meter</i> 2) The power fuse has blown. <i>Test the fuse with a meter</i>
The Oil Detected LED remains ON all the time.	1) The sensor needs cleaning out after detecting oil. <i>Using tissue paper dry the black bulb at the bottom of the sensor.</i> 2) The sensor has not been wired correctly. <i>Check the wiring connections to the sensor. .</i> 3) System fault. <i>Return to manufacture</i>
When the system has a Oil detected alarm, the LED remains OFF, but the audible warning devise sounds.	1) LED fault. <i>Go into lamp test mode to test the LEDS</i> 2) System fault. <i>Return to manufacture</i>
The system will not record a Oil detected alarm, the LED and audible warning devise remain OFF	1) System fault. <i>Return to manufacture</i>
Horn not working	1) Faulty horn. <i>Use the Test facility.</i> 2) System fault. <i>Return to manufacture</i>