



CMR Electrical Ltd  
Bolton House  
Five Chimneys Lane  
Hadlow Down  
East Sussex  
TN22 4DX  
Tel: 01825 733600

## Single and Two Zone Water Leak Detection Alarm Type LD2-2



The LD2-2 range has been designed to monitor critical areas for water leaks via spot sensors or linier cable. Any number of spot sensors or a maximum of 50 metres of linier water detection cable can be connected to each zone.

The range comes as standard with monitoring of the interconnecting cable between the sensors and the control unit. Any disconnection of the sensors from the controller will instigate a "Sensor Fault" alarm.

Complete with an audible warning device, mute push button, flashing 8mm red alarm lamp and 8mm Control live green lamp, the sensor monitoring circuit includes an 8mm tri-coloured LED, red (fault) /green (Normal) lamps per zone.

### *Standard and Optional Features*

- \* **Water leak detection cable or spot probe or a combination of both can be used**
- \* **Large indication LED lamps for ease of Alarm identification from a distance**
- \* **On board audible warning device to alert local operators of a problem**
- \* **Alarms latched until Mute operated to give indication of transient water leaks**
- \* **As standard, a common zone fault or power fault relay for onward signalling to a BMS**
- \* **As standard, a common water detected alarm relay for onward signalling to a BMS**
- \* **Monitoring of each zone cable and sensor to ensure continuity and integrity**
- \* **Individual Zone sensitivity adjustment allowing any zone to be set for high to low sensitivity**
- \* **A Bi-directional DC signal in the sensors to stop electrolyses and polarisation**
- \* **Lamps, relay and Horn test Facility to ensure that the unit is working correctly**
- \* **Zone Alarm test push button located inside to panel**
- \* **Optional; Zone 1 and or zone 2 alarm output relay contact for onward alarm signalling**
- \* **Optional; Output to flashing beacon or sounder/beacon**
- \* **Optional; SMS text messaging to one or two mobiles**
- \* **Optional; Remote repeat alarm unit type SCA with independent "Mute" alarm button**
- \* **Optional; Battery backup**



Once a water leak has been detected, the controllers red “Alarm” lamp will start to flash, the audible warning device will start and the common alarm relay will close. The unit will remain in this condition even if the water is removed from the sensor. Muting the alarm will stop the sounder and turn on the lamp permanently. If water is removed from the sensor before pressing the “Mute Alarm” button, after Muting the alarm lamp will extinguish indicating that no water is present and the common alarm relay de-energise. However if water is still being detected only the audible warning will stop leaving the lamp permanently on and the relay energised. Only when the water has been removed will the lamp extinguish and the relay de-energise. As standard all LD2-2 units have a common alarm and common zone fault / power fault set of volt free for onward signalling to Building Management Systems (BMS) or control system.

### OPTIONAL FEATURES

The following options can be added to the standard unit, please advise options at the time of ordering;

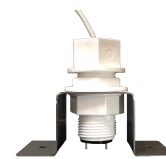
- 1) Individual zone alarm volt free output contacts
- 2) Output to flashing Beacon
- 3) Output to Beacon sounder that stops when the “Mute” push button is operated
- 4) Text messaging when an alarm is generated
- 5) Remote repeat alarm unit with separate “Mute” push button type SCA
- 6) Water valve shutdown using our LD2-2V range
- 7) 12 hour Battery backup

Each zone is provided with a sensitivity potentiometer, this has been provided to allow individual zones to be set to high sensitivity for sensitive areas or low sensitivity for areas known to experience high humidity or water splashes. Unlike other water detection units on the market, the LD2-2 range from CMR electrical uses a bi-directional (AC) signal within the sensors. Using alternating current stops electrolyses which causes the sensors to disintegrate and a system unable to detect water. The use of alternating current also allows the sensors to be continually monitored even when submersed in water. This allows the system to self reset after water has been removed for the sensor and no further action to reinstate or reset the system is required from the operator

### Water Leak Sensors



*Detection cable in any length up to 50m*



*Spot Probes for banded areas*

### Specification

Housing type  
Mounting  
Size  
Colour  
Input power  
Burden  
Power termination  
Voltage to sensor  
Connections to detection sensor  
Access  
Standard output contacts

ABS Plastic  
Wall, flush or surface  
200mm wide x 150mm high x 78mm deep  
Light grey  
50 Hz single phase 230VAC +/- 10%  
< 3VA  
Internal terminal block  
Bi-directional (AC) 5V  
Internal terminal block  
Top, bottom or back  
Common Alarm & Common Fault / Power fault rated @ 1A 230VAC

Continual development may result in products and specifications being changed without prior notice